



2017-18 'Rise up Roots Down' Intrepid Landcare Campaign

WA Landcare Network
PO Box 48, Dandaragan WA 6507
P 0427 333 664 E enquiries@landcarewa.org.au

www.landcarewa.org.au
facebook.com/WALandcare
twitter.com/Landcarewa

ABN 84 782 588 107

CONTENTS

A Message from Our Chair	3
---------------------------------	----------

About WALN	5
-------------------	----------

2017-18 KEY ACHIEVEMENTS	7
---------------------------------	----------

Advocate for and Represent the WA Landcare Movement	7
---	---

Network, Consult and Communicate with Members & the Broader Landcare Movement	8
--	---

Sustain and Build Capacity of the WA Landcare Movement	8
--	---

Strengthening WALN's capacity to facilitate landcare	8
--	---

OUR PEOPLE	9
-------------------	----------

Member Groups	10
---------------	----

Executive Committee	13
---------------------	----

Staff	13
-------	----

OUR FINANCES	14
---------------------	-----------

Income and Expenditure	14
------------------------	----

THE YEAR AHEAD	15
-----------------------	-----------



The WA Landcare Network acknowledges indigenous Australians as the first landcarers of this country and recognises their continuing connection to land, water and community. We pay our respects to elders past, present and emerging. WALN welcomes indigenous custodians into the landcare community and hopes to engage, partner and share knowledge to jointly care for country.



A MESSAGE FROM OUR CHAIR

Welcome to the WA Landcare Network's 2017-18 Annual Report. During this year we not only saw steady growth in WALN's membership and activities, but encouraging signs that community based landcare is having a resurgence in Western Australia, and indeed nationally.

By the end of the Financial Year our membership had grown to seventy-five active groups. We are proud to represent and support you all. In August 2017 we saw an impressive array of finalists for the State Landcare Awards, reflecting both the strength and the diversity of community effort underway. The Awards dinner was a proud night for us all. While our 2017 State of Landcare report showed the number of groups in agricultural and pastoral areas has declined in recent years, further use of the data analysis approach developed shows that we may have more than 500 active groups across the state, which is very encouraging indeed.

Amidst these encouraging signs, we are very well aware that many groups have faced increasingly difficult times as they try to finance their on-ground projects and the important educational and social work they do.

So, I would like to give special mention to the State NRM Grants. The approach taken by the State NRM Office, of supporting community efforts to achieve what the community itself has decided needs doing, is an outstanding example of cost effectiveness for public funding. As myself and other members of the WALN Committee get around and talk with WALN members, we are presented time and time again with proud stories of what has been achieved with the modest funds provided, and with stories of how the Capability Grants in particular have kept many groups functioning. This compares strongly with the approach seen elsewhere of considering local community groups as mere delivery agents for government priorities.

It is pleasing to see the growth in networking between groups with sharing of events and resources on the WALN Facebook and use of the WALN website. WALN has supported events in regional areas bringing local groups together to support each other to achieve better work on the ground. We hope to support more local areas with networking events in the coming year.

As a relatively young network WALN is now well established and increasingly able to make your voice heard. During this year we have been endeavouring to make your voice not just heard, but listened to and acted on, by State and Federal Governments. We anticipate having to work even harder on this in the coming year.

In closing, I'd like to thank the WALN Committee for their efforts during the year, with particular mention to Helen Watkins who battled many layers of paper for many months to bring you the landcare insurance scheme, and to Pat Hart, one of WALN's founders, who will be leaving the Committee at the AGM. During 2017-18 we employed a small cohort of part-time contractors – Louise Duxbury, Blair Darvill, Caroline Hughes and Jodie Quinn - who have not only done a fantastic job of ensuring WALN is useful to our members but have also been a shining example of the cost-efficiency, good heart and good humour that typifies landcare.



Keith Bradby OA

Chairperson, WA Landcare Network



WHO IS THE WA LANDCARE NETWORK?

The WA Landcare Network (WALN) is the peak state landcare body established to represent and support the network of diverse community organisations working together to address Western Australia's most challenging environmental problems.

To support and foster effective landcare in Western Australia WALN:

- » acknowledges indigenous Australians as the first landcarers of our country and recognises their continuing connection to land, water and community. WALN welcomes indigenous custodians into the landcare community and wishes to engage, partner and share knowledge to jointly care for country.
- » recognises and values the landcare community as the grassroots carers for the WA environment and our State's future. The WALN network is open to all organisations with an interest in landcare. WALN is effectively owned by grassroots landcarers. WALN not only connects landcare groups of all shapes and sizes, it provides landcare information and resources, and represents landcare across the State.
- » strives to be a collective independent voice for landcare and advocates on behalf of the landcare community at a State and Federal level based on a real-time understanding of what's happening on the ground. WALN hopes through strong advocacy on behalf of grassroots landcare we can build better support and capability for landcare in WA.
- » aims to build a landcare network that supports and strengthens the capability of landcare groups and individuals and enables them to get the landcare job done. WALN aims to assist landcarers to undertake their work and build strong state, national public and private support and involvement. WALN believes through increased support, coordination and capacity the landcare community can collectively achieve better environmental outcomes for WA.

Vision

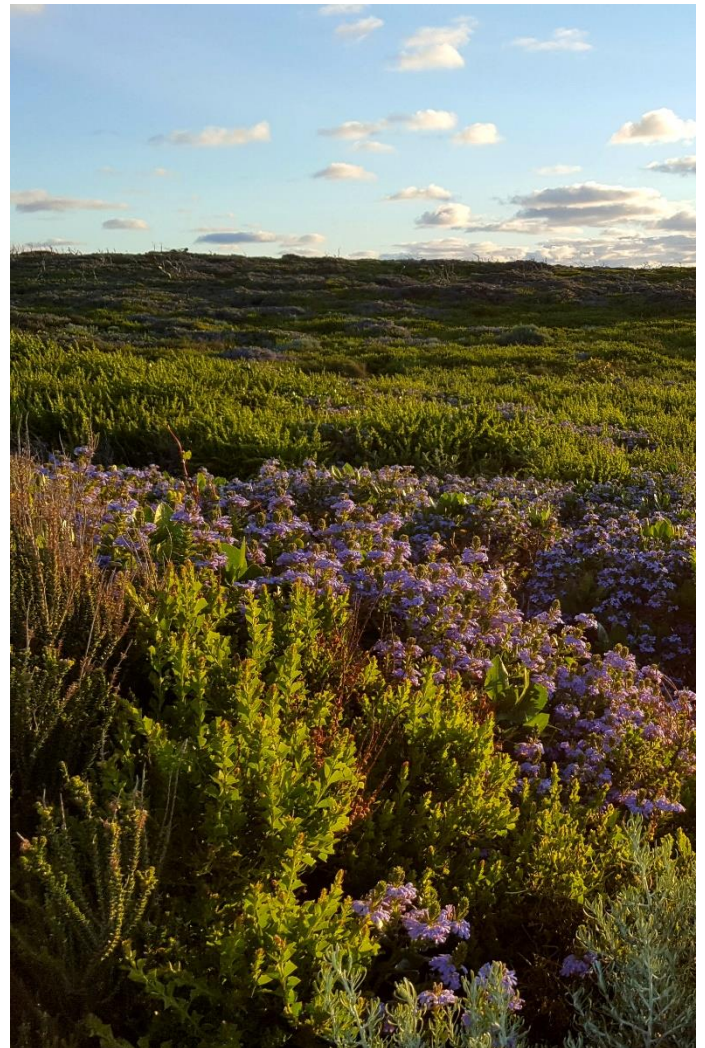
A supported network of diverse community organisations working together to address Western Australia's most challenging environmental problems and building communities able to respond positively to changes; resulting in a natural environment with fully functional ecosystems, a sustainable and productive agricultural system; and healthy, happy and resilient communities.

*A collective independent voice for
landcare... on behalf of the
landcare community.*

*Growing and supporting
community landcare.*

Mission

To establish an operating and useful landcare network in Western Australia that supports and strengthens the ability of member groups to undertake their work and have strong state, national public and private support and involvement.



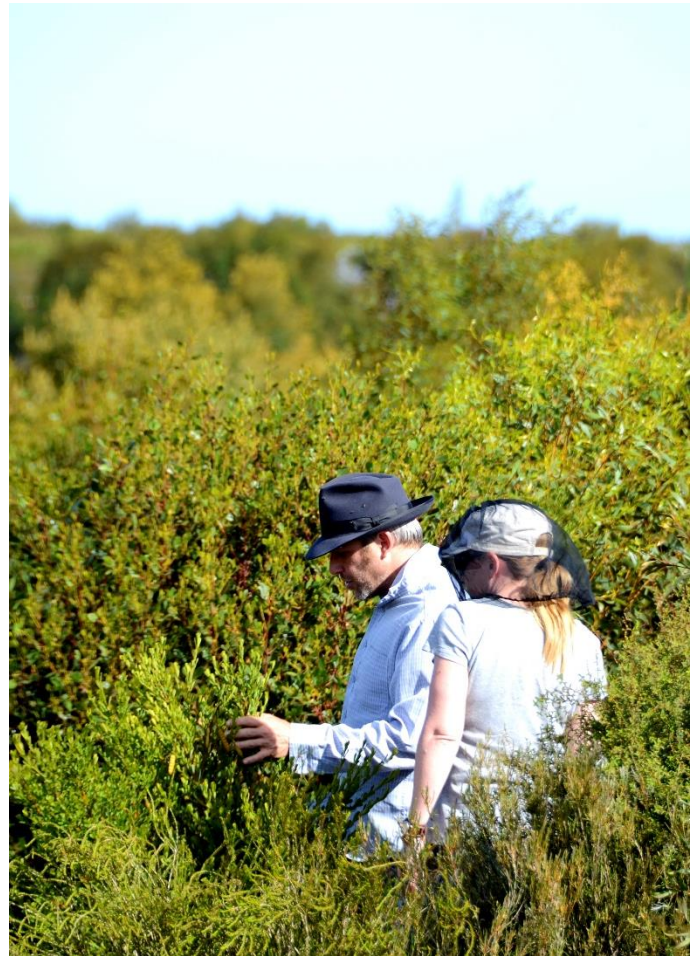
2017-18 KEY ACHIEVEMENTS

Established in 2014 the WA Landcare Network has recently completed its 4th year.

WALN is proud to report on the following key achievements against its 4 organisational objectives during the 2017-18 financial year:

1. Advocate for and Represent the WA Landcare Movement

- » Represented WALN on the National Landcare Network Council and Board, providing input and advocated for improved federal funding and support for community landcare.
- » Maintained a close working relationship with the State NRM Office. Provided comment regarding the State NRM Framework and worked towards the establishment of a WA NRM Collaborative Group.
- » Reviewed and identified gaps in State and Federal budget landcare allocations.
- » Advocated on behalf of Land Conservation District Committees (LCDCs) regarding their ineligibility for National Landcare Program funding.
- » Met with Hon Stephen Dawson MLC, Minister for Environment to introduce WALN and put a case for much greater government support for community landcare.
- » Facilitated a networking event with the Environmental Defenders Office, Gondwana Link, Great Southern landcare groups and landowners to review the legal barriers and opportunities to land conservation and restoration across south-western Australia.
- » Commenced a review of the 2017 State of Landcare Report to provide ongoing evaluation of landcare in WA.
- » Reviewed the National Landcare Program (NLP 2) proposal, sought feedback from WALN members, shared information nationally, and represented landcare's views on the program and the need for improved Federal funding and support in WA and nationally.



3. Network, Consult and Communicate with Members and the Broader Landcare Movement

- » Sponsored and contributed to the 2017 State NRM and Coastal Conference including assisting with event planning, advocating for greater community landcare involvement and support to attend, presenting on State of Landcare Report, facilitating Landcare Networking workshop and hosting a WALN and Members exhibition display and information stand.
- » Conducted two Annual General Meetings (2015-16 AGM and 2016-17 AGM) providing information sharing and networking opportunities to WALN members.
- » Increased WALN membership by 33% increasing WALN's reach in the landcare community.
- » Launched WALN website www.landcarewa.org.au providing an information hub for WALN members and the wider landcare community.
- » Maintained regular communications with WALN and the wider landcare community through quarterly newsletters, member emails and social media.

2. Sustain and Build Capacity of the WA Landcare Movement

- » Developed an affordable and practical community landcare group insurance package for WALN member groups.
- » In partnership with Intrepid Landcare developed a small grants program and ran the 'Rise Up Roots Down' campaign supporting three youth landcare engagement projects.
- » Supported Kent Shire to develop a local landcare collaboration network through workshop facilitation, attending follow-up meetings and seed funding

4. Strengthening WALN's capacity to facilitate landcare

- » Prepared a draft strategic and business plan to guide WALN strategic directions.
- » Initiated the development of a WA landcare Data Base to gain a better understanding of the status of landcare groups in WA.
- » Engaged a Communication Officer and initiated the development of a WALN Communications Plan.
- » Developed WALN Draft Policies and Procedures to streamline the organisation's business.

WA LANDCARE NETWORK MEMBERSHIP

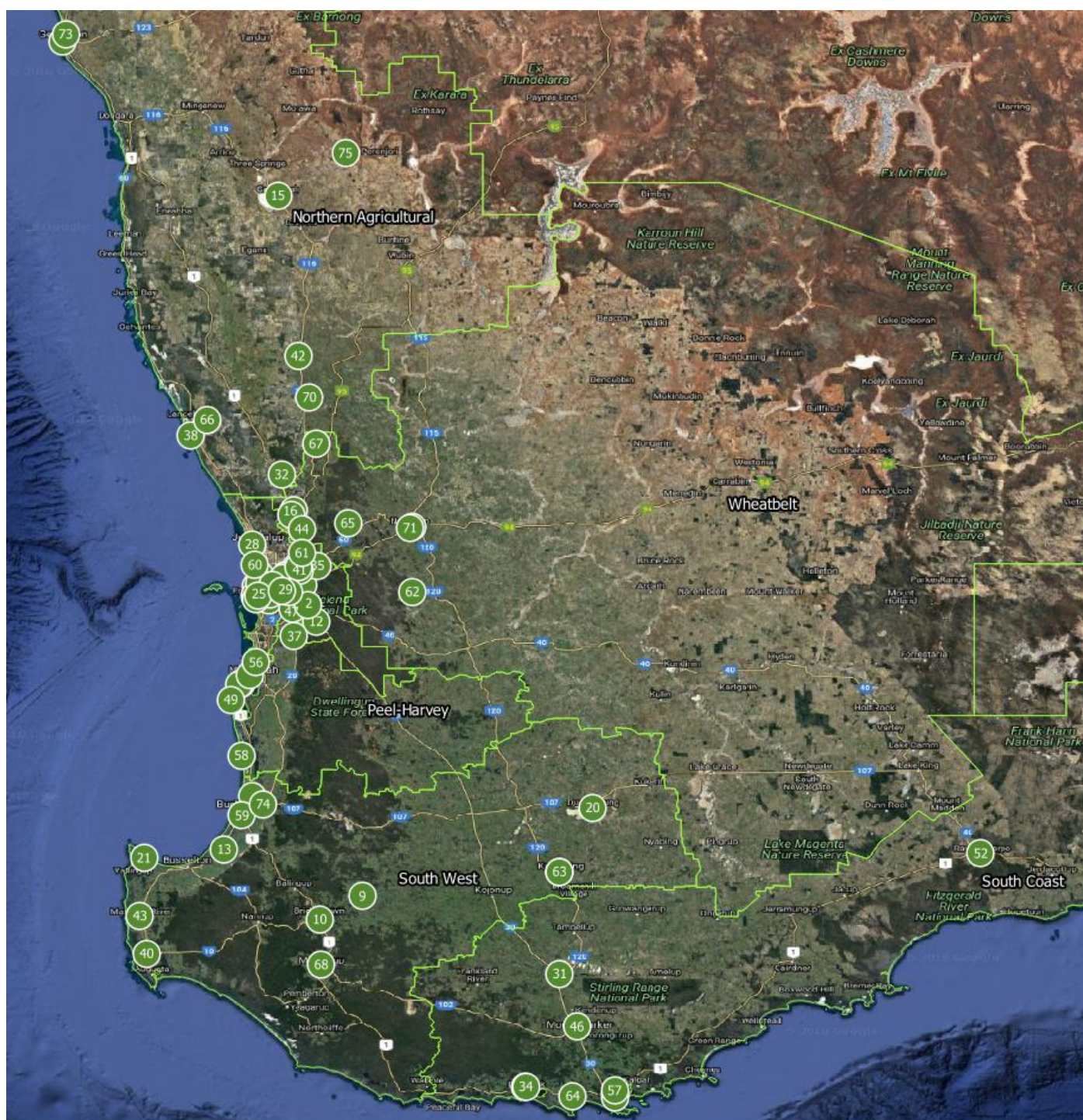
Membership of the WA Landcare Network Inc (WALN) is open to any community group with an interest in landcare. The WALN Rules of Association defines landcare as: *'any activity contributing to the improvement of the natural environment. The natural environment includes urban and rural bush, waterways, wetlands, natural parks, reserves, agricultural landscapes, and soils'*.

During 2017-18 WALN increased its membership by 33% from 50 to 75 member groups. Membership increases can be attributed to increased communications and promotional activities and the development of the WA Landcare Insurance Scheme offering significant benefit to WALN members.

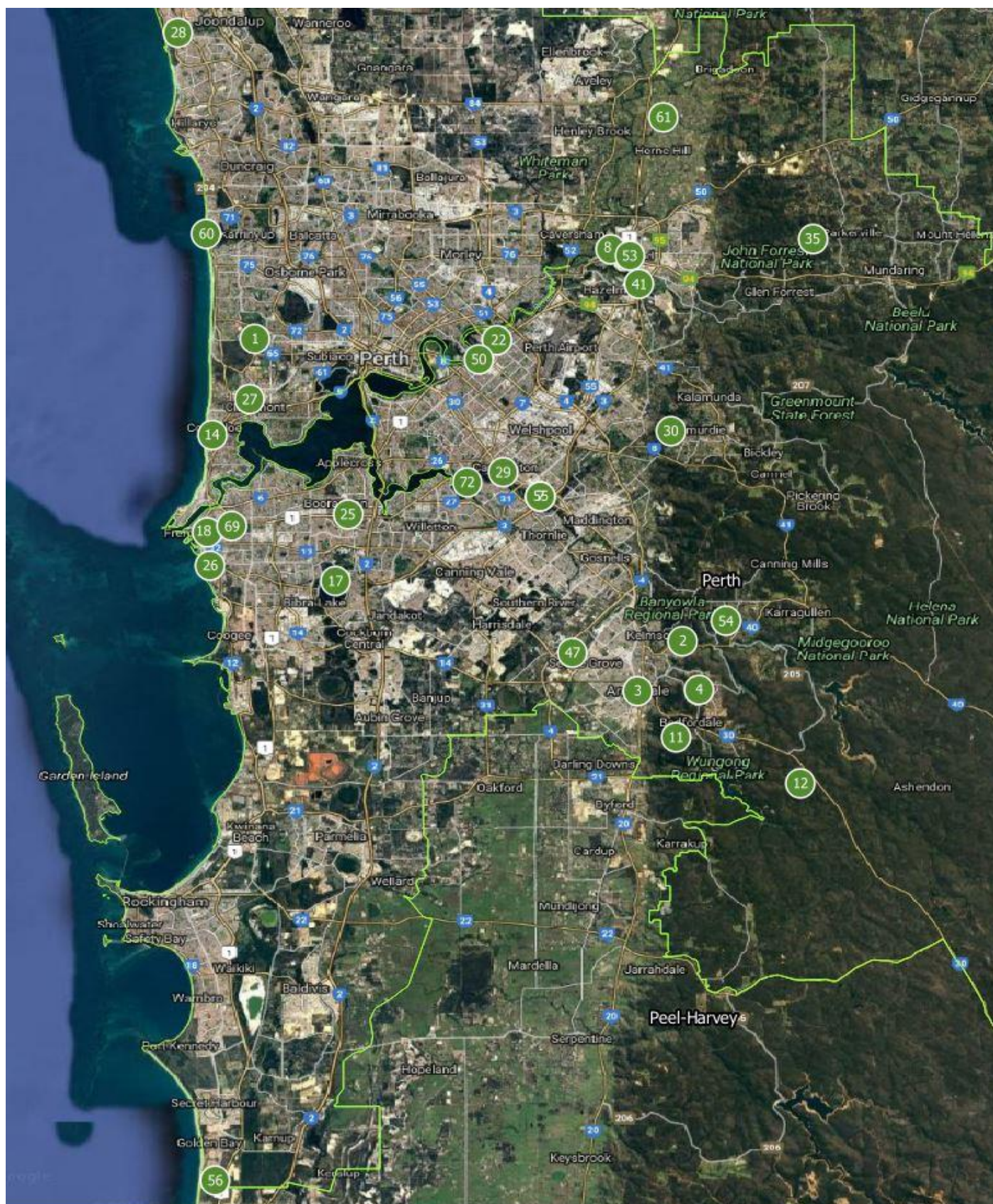


WA LANDCARE NETWORK MEMBER GROUPS (as at 30th June 2018)

1. Armadale Branch Wildflower Society of WA
2. Armadale City Rivercare Group
3. Armadale Gosnells Landcare Group Inc
4. Armadale Settlers Common Management Group
5. Australian Coastal Society
6. Avon Valley Environmental Society Inc
7. Bannister Creek Catchment Group
8. Blackadder Woodbridge Catchment Group Inc
9. Blackwood Basin Group
10. Blackwood Environment Society
11. Bungendore Park Environmental Group Inc
12. Canning River Residents Environment Protection Assoc Inc.
13. Capel Land Conservation District Committee
14. Carbon Neutral Charitable Fund
15. Carnamah LCDC
16. Chittering Landcare Centre
17. Cockburn Community Wildlife Corridor Inc
18. Cockburn Wetlands Education Centre Inc
19. Denmark Weed Action Group Inc
20. Dumbleyung Land Conservation District Committee
21. Dunsborough Coast and Land Care Inc
22. Eastern Metropolitan Regional Council (EMRC)
23. Ellen Brook Integrated Catchment Management Group
24. Falcon Coastcare
25. Friends of Booragoon and Bluegum Lakes
26. Friends of Hollis Park
27. Friends of Lake Claremont Limited
28. Friends of North Ocean Reef - Illuka Foreshore
29. Friends of Queens Park Bushland
30. Friends of Upper Lesmurdie Falls Inc
31. Gillimii Centre
32. Gingin Water Group Inc
33. Gondwana Link Ltd
34. Green Skills Inc.
35. Jane Brook Catchment Group Inc
36. Katanning LCDC
37. Landcare Serpentine Jarrahdale Inc.
38. Ledge Point Coastcare
39. Leschenault Catchment Council
40. Lower Blackwood Land Conservation District Committee
41. Lower Helena Association Inc
42. Moore Catchment Council Inc
43. Nature Conservation Margaret River Region
44. North Swan Land Conservation District Committee (Bullsbrook Landcare)
45. Northern Agricultural Catchments Council
46. Oyster Harbour Catchment Group
47. Palomino Catchment Group
48. Peel-Harvey Catchment Council
49. Peron Naturaliste Partnership Inc
50. Perth NRM
51. Rangelands NRM WA
52. Ravensthorpe Agricultural Initiative Network (RAIN)
53. Revegetation Industry Association of WA Inc
54. Roleybushcare Inc.
55. SERCUL: South East Regional Centre for Urban Landcare Inc
56. Singleton Coastcare
57. South Coast Natural Resource Management Inc.
58. South West and Peel Coastal Management Group (CoastSWaP)
59. South West Catchments Council
60. Stirling Natural Environment Coastcare Inc
61. Susannah Brook Catchment Group Inc
62. Talbot Brook Land Management Assoc. Inc.
63. The Katanning Wildflower Group
64. Torbay Catchment Group Inc
65. Trees4Change
66. WA Landskills Inc
67. Wannamal Lake Catchment Group
68. Warren Catchment Council Inc
69. Waterbird Conservation Group Inc
70. West Koojan Gillingarra Land Conservation District Committee
71. Wheatbelt NRM Inc
72. Wilson Wetlands Action Group
73. WISALT Inc
74. WoolkabunningKiaka
75. Yarra Catchment Management Group



WA Landcare Network Members across the NRM regions of WA
(30th June 2018)



WA Landcare Network Members across the Perth region
(30th June 2018)

THE WALN TEAM

WALN operates with an Executive Committee of five to seven members who work with contracted staff to provide benefits to members and raise the profile of landcare in WA.

2017-18 WALN Office Bearers and Committee included:

Chair	Keith Bradby
Secretary/Treasurer	Helen Watkins
Committee	Pat Hart
	Jo Ludbrook
	John Holley
	Mick Davis
	Ken Downsborough (resigned date Nov 2017)

2017-18 Contract support staff included:

Louise Duxbury	Executive Officer (leave of absence from Oct 2017)
Blair Darvill	Project Officer and Acting Executive Officer
Caroline Hughes	Communications and Administration Officer (from Feb 2018)
Jodie Quinn	Communications Assistant (from May 2018)

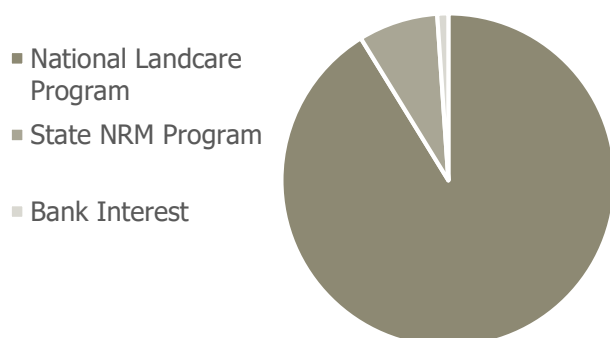


WALN Team Members (L-R) Mick Davis, Blair Darvill, Louise Duxbury and Keith Bradby

FINANCIAL REPORT

During 2017-18 WALN's only source of income, with the exception of bank interest, was State and Federal grant funding. WALN's 2017-18 income exceeded expenditure resulting in a carry forward of grant funds to 2018-19. WALN's largest expenses during the 2017-18 year were for contract staff, communications and travel.

2017-18 Income \$104,157



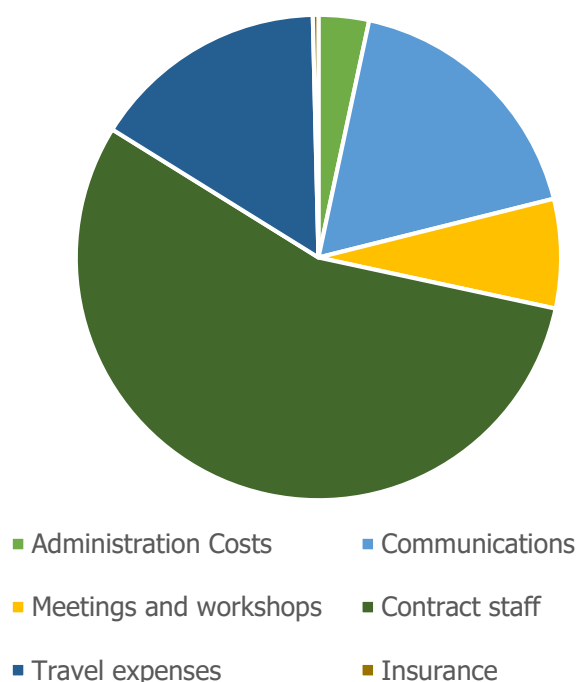
BREAKDOWN OF 2017-18 INCOME

National Landcare Program	\$95,000
State NRM Program	\$8,040
Bank Interest	\$1,117
TOTAL INCOME	\$104,157

BREAKDOWN OF 2017-18 EXPENDITURE

Administration Costs	\$2,928
Communications	\$15,469
Meeting and Workshops	\$6,343
Contract Staff	\$48,350
Travel Expenses	\$13,760
Insurance	\$325
TOTAL EXPENDITURE	\$87,175
UNSPENT GRANT INCOME	\$16,982

2017-18 Expenditure \$87 175



Further details of 2017-18 Income and Expenditure are available in 'WA Landcare Network Financial Report for the Year Ended 30 June 2018' prepared by independent auditors Fond Richards, Certified Practicing Accountants and available for viewing by contacting WALN at enquiries@landcarewa.org.au.

THE YEAR AHEAD

At the time of publication 2018-19 was already well underway. WALN's first big achievement for the new financial year was the WALN Members and Stakeholder's Forum at Cockburn Wetlands Education Centre on 20 July 2018. The day was a huge success filled with high calibre, informative and engaging presentations and a fantastic, warm and friendly landcare networking buzz. The WALN Executive Committee and staff all enjoyed themselves and feedback showed other participants did too. WALN hopes the event will be the first of many annual forums for network members and stakeholders.

WALN also now has John Holley on board on its Executive Committee. John has spent over 30 years with the WA public service with more than 20 years in landcare and natural resource management. John brings a wealth of knowledge and insight to the WALN Committee and we look forward to working with him to better support the WA landcare community.



WALN is now ready to knuckle down and make a real difference in 2018-19. A taste of what's to come:

- »» WALN Annual General Meeting in November at Perup: Nature's Guesthouse providing an information sharing and networking opportunity for our member groups.
- »» Plan and coordinate an engaging, inclusive and informative 2019 State NRM and Coastal Conference with key partners.
- »» A partnership with NRMWA to establish a State NRM Collaborative Group to increase communication and collaboratively rework the way we do landcare in WA.
- »» Representation of WA's interests in the proposed merger of the National Landcare Network and Landcare Australia to ensure the new national body functions as a genuine landcare representative body.
- »» Further development of a state-wide landcare database allowing WALN to collate state-wide information on who's doing what and where, establish better networking amongst the landcare community and strengthen WALN's capacity to support WA Landcare.
- »» Increased communication and consultation with our members and stakeholders to sharpen our messages to government and strengthen networking between groups, assisting landcarers with the sharing of information and to better tackle the tasks ahead of them.
- »» A survey of all umbrella landcare groups to contribute to a 2018 review of the State of Landcare in WA Report.
- »» Continue lobbying at State and Federal level as we strive to ensure landcare gets the support we need from government to be efficient and effective.
- »» Further building of links between landcare and aboriginal groups and information sharing including cultural burning programs and practices.

